

Emerson™

SureSwitch™ Contactor Upgrade



49P11-843

Universal Electronic Replacement
for Mechanical Compressor Contactors



Contactor

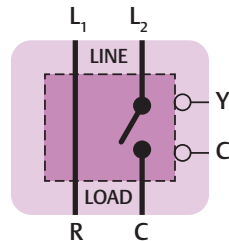


- Short-Cycle Timer
- Brownout Protection
- Long-Life Sealed Switch



Benefits

- 5x contactor life
- Totally sealed switch to keep out ants and debris
- Microprocessor control nearly eliminates contact welding and pitting
- Ideal install with new Preventative Maintenance contracts
- Compressor is protected from brownouts and short cycling
- Save on pest control treatments



5-Year Limited Warranty

For up to 5 Ton/40 FLA applications



White-Rodgers™

EMERSON™

Emerson™

SureSwitch™ Contactor Upgrade

49P11-843



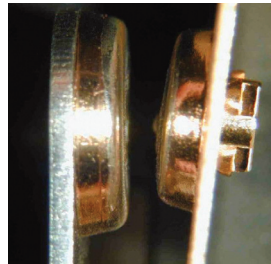
Universal Electronic Replacement for Mechanical Compressor Contactors

Features

- Microprocessor controlled sealed compressor switching
- Line voltage brownout protection
- Short cycle protection
- Tricolor LED displays
- Heavy-duty lug connectors
- Zero chatter latching relay
- Four-hole mounting matches mechanical contactors
- Random start delay on power up and brownout recovery
- Compressor test and cycle count by pushbutton

Performance Tested

The sealed SureSwitch has undergone exhaustive testing on Copeland 5-ton scroll compressors to demonstrate ultimate reliability. This technology has been utilized on OEM controls since 2006 and is now available for the Aftermarket.

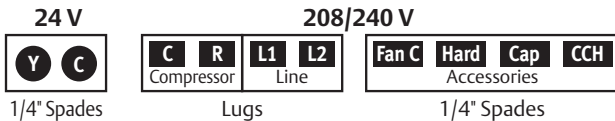


Contacts after one million cycle testing.

5x Contactor Life

Microprocessor controlled switching algorithms reduce arcing, virtually eliminating contact pitting and welding.

Terminal Designations



Specifications

Electrical Ratings

Line Voltage Input 208/240 VAC, 50/60 Hz
 Full Load Amperes (FLA) 40A
 Locked Rotor Amperes (LRA) 200A
 Control (Coil) Voltage (Y, C) 24 VAC, 50/60 Hz

Recommended Terminal Torque – C, R, L1 and L2

#4 – 6 AWG 45 in-lbs
 #8 AWG 40 in-lbs
 #10 – 14 AWG 35 in-lbs
 24 VAC (Y, C) Terminals are 1/4" Male QC's accepting #12-24 AWG wire

Timings

Anti-Short-Cycle Delay 0s or 180s (selectable) at 60 Hz
 0s or 216s (selectable) at 50 Hz
 Compressor Test 5s at 60 Hz
 6s at 50 Hz

LED Flash Codes	
Slow Green	Standby
Solid Green	Normal
Fast Green	Delay
Green / Red	Low Line Volt.
Green / Yellow / Red	Test

Dimensions

2-3/4" W x 2-3/8" H x 3-7/8" L

Operating Temperature Range

-40° to 158° F (-40° to 70° C)

Humidity Range

5 to 95% relative Humidity (non-condensing)

For Additional Information

EmersonSureSwitch.com
Scan QR Code or visit us at www.white-roddgers.com

SureSwitch requires line voltage for operation and testing

Saint Louis, Missouri
314-553-3600

Markham, Ontario
905-948-3411

White-Rodgers™

www.white-roddgers.com
www.emersonsureswitch.com

The Emerson logo is a trademark and a service mark of Emerson Electric Co.



WR-5976-5