



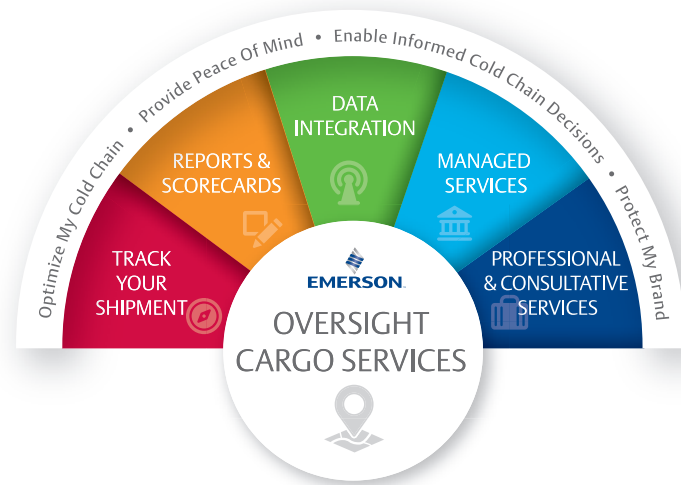
## Oversight Cargo Services

Modular, value-added services from Emerson's cold chain experts



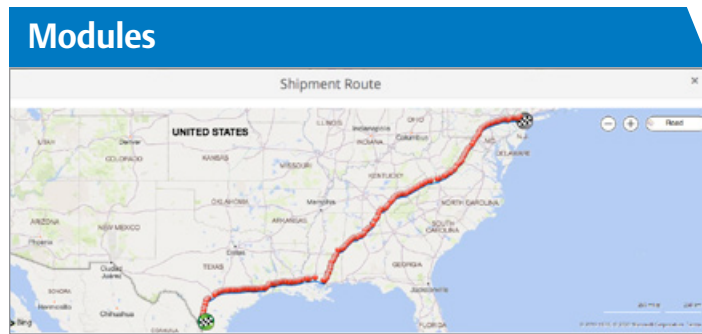
# Strengthen Your Perishable Cold Chain

Operating within the global perishable supply chain requires monitoring shipments and maintaining precise temperature ranges throughout long-distance journeys. From producers and food retailers to shippers and third-party logistics (3PL) providers, successful companies rely on Emerson's Oversight cargo services to provide robust cold chain software and value-added services (VAS) to help preserve the integrity of shipments.



The cloud-based Oversight portal delivers detailed information on real-time and historic shipment performance by integrating with our field-proven line of GO real-time trackers and loggers. Its intuitive dashboards, visualizations and comprehensive reports reveal critical data regarding shipments from ports of origin to final destinations.

But for those who want to take shipment monitoring, data analytics and reporting capabilities to the next level, we offer an upgraded suite of paid Oversight cargo services. Backed by Emerson's cold chain logistics experts, we work with you to provide insights, streamline shipping operations, and strengthen the perishable cold chain.



## Track Your Shipment

The Track Your Shipment module provides growers and producers with quick and easy access to real-time, in-transit, perishable shipment data. Simply embed the website widget on your homepage to enable customer access, or place it on your intranet to give your employees access to quick tracking and temperature monitoring. All you need is a GO real-time tracker serial number to track any shipment.

Track Your Shipment benefits include:

- Gain easy-access visibility to shipment and temperature data.
- Improve operational efficiency and transparency.
- Promote food quality and safety.

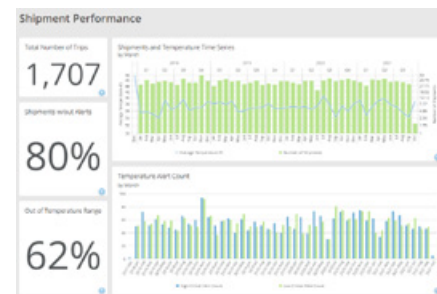
## Reports and Scorecards

Technological advancements have increased the availability of shipment, sensor and location data. But an abundance of data is only helpful if it delivers empowering information to the right people at the right time. The Oversight cargo services team consolidates data and turns it into actionable insights that you can use to improve operations and deliver safe and high-quality food.

Reports and Scorecards allow you to access our temperature monitoring dashboard to view key data points; identify trends that are meaningful to your operation; and diagnose recurring issues by pinpointing the sources of problems — whether that is the carrier, origin or destination.

Reports and Scorecards benefits include:

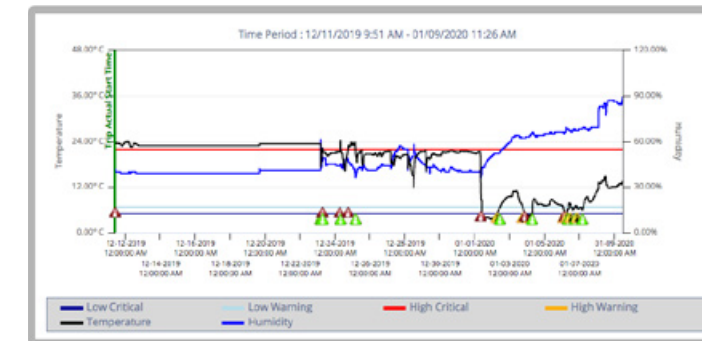
- Identify specific excursion points.
- Take corrective actions with data insights.
- Extrapolate actionable data from sensor data.
- Identify patterns and correlations across multiple shipments.



## Data Integration

Managing multiple shipments and temperature data streams within different software platforms can impair the efficiency of your operation. Our Data Integration module reduces these complexities by consolidating in-transit cold chain data into a seamless experience within your existing software platforms.

Data Integration allows you to eliminate disparate platforms, siloed data streams and various logins to provide shipment updates and alerts within one consolidated view. Our Data Integration service also provides the capability to streamline the shipment creation process into one system.



Data Integration benefits include:

- Streamline the “create shipment” and “PO entry” processes.
- Reduce overhead costs and task duplication.
- Consolidate in-transit data into one view.
- Enable location and temperature alert management in your application.

## Managed Services

The responsibilities of examining and deciphering an abundance of temperature data can be overwhelming to small and large operations alike. Our Managed Services team of cold chain specialists provides high-level attention to your operation with 24x7x365 shipment monitoring.

We work with you to create your desired level of service based on your operating procedures. By providing escalation processes and direct carrier contact on high-value loads, Managed Services can help reduce rejections, identify deviated routes, and mitigate potential security concerns, all of which create peace of mind for your operations teams. Outsource your cold chain monitoring to our team of experts.

Managed Services benefits include:

- Protect your brand with always-on shipment monitoring best practices.
- Improve communications and notifications among key stakeholders.
- Create custom procedures for swift, responsive action to any scenario.



## Professional and Consultative Services

Effective cold chain management is a complex and challenging prospect, especially given the growing complexities of the global ecosystem. Most businesses would benefit greatly from the fresh perspectives and insights of cold chain experts capable of identifying efficiency gaps in their operations. Enter the Professional and Consultative Services team from Emerson.

Whether you've identified a source of concern, are preparing for an audit, or seeking new perspectives on persistent challenges, our team is ready to offer support. We'll perform a comprehensive, on-site assessment of your operation and deliver actionable recommendations that can pay big dividends.

Professional and Consultative Services benefits include:

- Receive full on-site assessment of your cold chain operations.
- Receive actionable recommendations for improvement.
- Identify potential impacts to food safety and quality.



For further insight into Oversight cargo services, we invite you to visit this resource.

## Sales and support offices

### Asia

Tel: +852 2866 3108

Email: [CargoAsia@Emerson.com](mailto:CargoAsia@Emerson.com)

### Australia

Tel: +614 3733 9413

Email: [CargoOceania@Emerson.com](mailto:CargoOceania@Emerson.com)

### Brazil

Tel: +55 15 3413 8127

Email: [CargoLatinAmerica@Emerson.com](mailto:CargoLatinAmerica@Emerson.com)

### Canada

Tel: +1 519 720 2235

Email: [CanadaInfo.Climate@Emerson.com](mailto:CanadaInfo.Climate@Emerson.com)

### Central America

Tel: +506 2506 5300

Email: [CargoLatinAmerica@Emerson.com](mailto:CargoLatinAmerica@Emerson.com)

### Chile

Tel: +56 229 284800

Email: [CargoLatinAmerica@Emerson.com](mailto:CargoLatinAmerica@Emerson.com)

### China

Tel: +8621 3338 7333

Email: [CargoChina@Emerson.com](mailto:CargoChina@Emerson.com)

### Europe

Tel: +39 0437 9833

Email: [CargoEurope@Emerson.com](mailto:CargoEurope@Emerson.com)

### Mexico

Tel: +52 33 3475223

Email: [CargoMexico@Emerson.com](mailto:CargoMexico@Emerson.com)

### Middle East/Africa

Tel: +971 4 811 8100

Email: [CargoMEA@Emerson.com](mailto:CargoMEA@Emerson.com)

### United States

Tel: +1 877 998 7299

Email: [CargoSales@Emerson.com](mailto:CargoSales@Emerson.com)

## Technical support

Available 24 hours a day, 7 days a week.

Toll-Free: +1 877 998 7299

Email: [CargoSupport@Emerson.com](mailto:CargoSupport@Emerson.com)

General Inquiries: [CargoSolutions@Emerson.com](mailto:CargoSolutions@Emerson.com)



Scan to select the service that fits your business needs or learn more.

# LUMITY™

Connect with Emerson  
Commercial & Residential Solutions



[Emerson.com/Cargo](https://www.emerson.com/Cargo)

OCS.Brochure.Rev2.01.22 Emerson is a trademark of Emerson Electric Co. or one of its affiliated companies. ©2022 Emerson Electric Co. All rights reserved.

**EMERSON. CONSIDER IT SOLVED.™**