

In-Transit Cargo Monitoring Solutions



The global perishable supply chain is complex with many handoff points. Our core technologies, coupled with our cold chain expertise, help retailers, restaurants, growers, suppliers, shippers and exporters mitigate food waste while helping ensure only the freshest and safest products reach consumers. Our cold chain solutions provide visibility into in-transit cargo shipments, help enable streamlined supply chains and promote better quality and safety decisions.

Whether you need to monitor and protect the temperature of perishable foods on the road, identify the specific location of a shipment of potentially life-saving medicine, or verify the security of high-value merchandise in transit we have the tracker that fits your business.

The cellular networks that support GO Real-Time Trackers are changing. Many networks across the globe will become obsolete and be replaced by next-generation technologies. This transition may present gaps in coverage and could potentially impair your abilities to track and monitor temperature and location data of in-transit perishable shipments.

With our complete suite of Trackers, we can recommend the correct unit for your geographical region and shipping route.

Next Generation Technology

GO Real-Time 4G/5G Trackers



	STANDARD			– LT SERIES			GLOBAL	
	Standard	XL	Reusable	Standard	XL	Reusable	Global	Global Plus
Temperature	✓	✓	✓	✓	✓	✓	✓	✓
Humidity	✓	✓	✓	✓	✓	✓	✓	✓
Location	✓	✓	✓	✓	✓	✓	✓	✓
Light	✓	✓	✓	✓	✓	✓	✓	✓
20 Day	✓	✓	✓	✓	✓	✓	✓	✓
60 Day		✓			✓			✓
90 Day								✓
Low Temp				✓	✓	✓		✓
Probe							✓	✓

Legacy Technology

GO Real-Time 2G Trackers & Non-Lithium, Battery Trackers



Product availability may vary by country. Please consult your local sales representative to select the tracker that is ideal for your geographical region and shipping route.



GO Loggers – Data Insight Beyond Your Eyesight

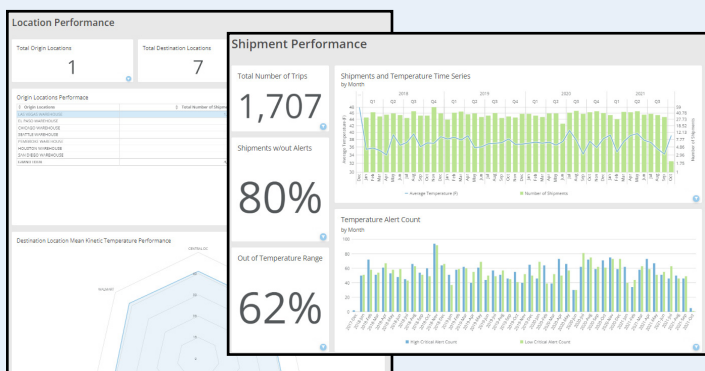
Oversight Software and Services

The central cold chain reporting solution for in-transit shipments.

Comprehensive and automated reporting is provided through the Oversight Dashboard and the Oversight Mobile app. Our technology aggregates encrypted data streams from GO Real-Time Trackers and Loggers into an online portal enabling cold chain insight into the perishable supply chain. The interface provides robust reporting of key shipment information including temperature, security and location details. Both Oversight and the Oversight Mobile app are available in multiple languages including English, Chinese, Spanish, Italian, German, Portuguese, Turkish, Russian, Korean and French.



From producers and food retailers to shippers and third-party logistics providers, successful companies rely on Oversight Cargo Services to provide the robust cold chain software and value-added services to help them preserve the integrity of their shipments. Take shipment monitoring, data analytics and reporting capabilities to the next level with a suite of modular Oversight Cargo Services. Backed by Emerson's cold chain logistics experts, we work with your teams to provide insights, streamline shipping operations, and strengthen your perishable cold chain.



GO NFC Logger

- Monitors time and temperature with data viewed via short-range NFC (Near Field Communications)
- Supports Android and iOS devices with NFC mobile app or NFC Pad Reader
- Data can be stored locally or uploaded and managed via Oversight



GO PDF Logger

- Monitors time and temperature data for perishable and life science products
- Integrated USB connection point for direct computer access
- Automatically generates PDF file, no additional software or readers required

Also available in Lite model



GO Contact Logger

- Monitors time and temperature data
- Provides surface read data
- Temperature data accessed via the Contact Reader



GO USB Logger

- Reusable, programmable and monitors time, temperature, and humidity levels (probe option available)
- LED screen allows for easy reading of current data and alarm conditions
- Integrated USB connection point for direct computer access that automatically generates a PDF file



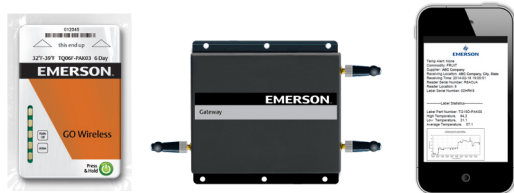
GO Bluetooth Plus Logger

- Monitors time, temperature, humidity and pulp temperature
- Two probe options, optimal for a variety of perishable products
- Pairs with Bluetooth reader mobile app with range up to 100 feet (30 meters)



GO Systems – Flexibility for Your Facility

Inbound Monitoring



A self-contained, wireless system that provides a streamlined, automatic temperature monitoring experience. AutoSense™ Gateways are installed in facilities. They are pre-configured and automatically connect when turned on, creating their own independent network. When GO Wireless Loggers arrive on containers, data is wirelessly sent to Oversight for ongoing storage and analysis. Text and email alerts are created and delivered to predefined quality assurance personnel.



GO GreenSense™ Program

GO GreenSense is a recycling program that facilitates the return of GO Tracker and Logger products for proper battery and component recycling. Emerson Cargo Solutions provides customers with eco-friendly return boxes and the appropriate pre-paid postage return labels. Customers can then simply place units in the return box and ship them back to Emerson. GO GreenSense takes the hassle out of returning temperature monitoring devices for recycling.

For more information, contact GOGreen@Emerson.com

Emerson.com/Cargo

CB.Bro.Rev4.12.21-U.S. Emerson and AutoSense are trademarks of Emerson Electric Co. or one of its affiliated companies. ©2021 Emerson Electric Co. All rights reserved.

Sales and Support Offices

Asia

Tel: +852 2866 3108

Email: CargoAsia@Emerson.com

Australia

Tel: +614 3733 9413

Email: CargoOceania@Emerson.com

Brazil

Tel: +55 15 3413 8127

Email: CargoLatinAmerica@Emerson.com

Canada

Tel: +1 519 720 2235

Email: CanadalInfo.Climate@Emerson.com

Central America

Tel: +506 2506 5300

Email: CargoLatinAmerica@Emerson.com

China

Tel: +8621 3338 7333

Email: CargoChina@Emerson.com

Chile

Tel: +56 229 284800

Email: CargoLatinAmerica@Emerson.com

Europe

Tel: +39 0437 9833

Email: CargoEurope@Emerson.com

Mexico

Tel: +52 33 3475223

Email: CargoMexico@Emerson.com

Middle East/Africa

Tel: +971 4 811 8100

Email: CargoMEA@Emerson.com

United States

Tel: +1 877 998 7299

Email: CargoSales@Emerson.com

Technical Support

Available 24 hours a day, 7 days a week.

Toll Free: +1 877 998 7299

Email: CargoSupport@Emerson.com

General Inquiries: CargoSolutions@Emerson.com



Download Oversight Mobile app

Connect with Emerson
Commercial & Residential Solutions

